



## Dane County Regional Airport PFAS BRRT #02-13-584369 and # 02-13-584472

### December 2025 Progress Report

This document provides a progress report summary of actions taken by Dane County Regional Airport (DCRA) since June 2025 at BRRTS #02-13-584369 and # 02-13-584472.

#### **Darwin Street Fire Fighting Training Area**

Groundwater monitoring of the Darwin Site has continued since the remediation work done in April through June of 2025. A *Remedial Action Performance Three-Month Post Injection Report (Aug. 2025)* was prepared by Fehr Graham. The conclusions from this report are presented below:

- Monitoring wells MW-3 (5,440 ng/L), MW-5 (4,080 ng/L), and MW-6 (9,260 ng/L) continue [to] exceed the [DHS Cycle 11 recommended] Enforcement Standard for PFOA of 20 ng/L while MW-4 (3.8 ng/L) exceeds the [DHS Cycle 11 recommended] Preventative Action Limit for PFOA of 2 ng/L.
- Monitoring wells MW-3 (304 ng/L) and MW-5 (119 ng/L) exceed the [DHS Cycle 11 recommended] Enforcement Standard for PFNA of 30 ng/L while MW-4 (<0.50 ng/L) and MW-6 (<1.9 ng/L) are below the [DHS Cycle 11 recommended] Preventative Action Limit for PFNA of 3 ng/L.
- Monitoring wells MW-3 (40,800 ng/L), MW-5 (10,500 ng/L), and MW-6 (5,780 ng/L) exceed the [DHS Cycle 11 recommended] Enforcement Standard for PFHxS of 40 ng/L while MW-4 (7.4 ng/L) exceeds the [DHS Cycle 11 recommended] Preventative Action Limit for PFHxS of 4 ng/L.
- Monitoring wells MW-3 (1,410 ng/L) and MW-5 (3,810 ng/L) exceed the [DHS Cycle 11 recommended] Enforcement Standard for PFOS of 20 ng/L while MW-4 (3.6 ng/L) and MW-6 (2.5 ng/L) exceeds the [DHS Cycle 11 recommended] Preventative Action Limit for PFOS of 2 ng/L.
- Monitoring well MW-3 (6.5 ng/L) exceeds the [DHS Cycle 11 recommended] Preventative Action Limit for FOSA of 2 ng/L.
- Fluoride concentrations remain stable in sampled wells in comparison to past sampling events.



A *Remedial Action Performance Six-Month Post Injection Report (Nov. 2025)* was prepared by Fehr Graham. The conclusions from this report are presented below:

- Monitoring wells MW-1 (233 ng/L), MW-2 (2,920 ng/L), MW-3 (13,200 ng/L), MW-5 (3,580 ng/L), MW-6 (19,100 ng/L), MW-7 (102,000 ng/L), and PZ-1 (22,100 ng/L) continue exceed the [DHS Cycle 11 recommended] Enforcement Standard for PFOA of 20 ng/L while MW-4 (2.7 ng/L) exceeds the [DHS Cycle 11 recommended] Preventative Action Limit for PFOA of 2 ng/L.
- Monitoring wells MW-2 (36.6 ng/L), MW-3 (114 ng/L), MW-5 (77.5 ng/L), and PZ-1 (526 ng/L) exceed the [DHS Cycle 11 recommended] Enforcement Standard for PFNA of 30 ng/L. Monitoring well MW-6 (29.8 ng/L) and MW-7 (22.5 ng/L) exceed [DHS Cycle 11 recommended] Preventative Action Limit for PFNA of 3 ng/L. While MW-1 (0.41 ng/L) and MW-4 (<0.31 ng/L) are below the [DHS Cycle 11 recommended] Preventative Action Limit for PFNA of 3 ng/L.
- Monitoring wells MW-1 (293 ng/L), MW-2 (7,800 ng/L), MW-3 (38,600 ng/L), MW-5 (7,700 ng/L), MW-6 (21,500 ng/L), MW-7 (179,000 ng/L), and PZ-1 (98,700 ng/L) exceed the [DHS Cycle 11 recommended] Enforcement Standard for PFHxS of 40 ng/L, while MW-4 (5.0 ng/L) exceeds the [DHS Cycle 11 recommended] Preventative Action Limit for PFHxS of 4 ng/L.
- Monitoring wells MW-2 (1,150 ng/L), MW-3 (320 ng/L), MW-5 (2,180 ng/L), MW-7 (25.6 ng/L), and PZ-1 (1,960 ng/L) exceed the [DHS Cycle 11 recommended] Enforcement Standard for PFOS of 20 ng/L, while MW-1 (17.8 ng/L) MW-4 (3.1 ng/L), and MW-6 (33.7 ng/L) exceeds the [DHS Cycle 11 recommended] Preventative Action Limit for PFOS of 2 ng/L.
- Monitoring well MW-2 (6.9 ng/L) exceeds the [DHS Cycle 11 recommended] Preventative Action Limit for FOSA of 2 ng/L.
- Fluoride concentrations remain stable in sampled wells in comparison to past sampling events.

Pre- and post-remediation PFOA, PFNA, PFHxS, and PFOS sampling results for each monitoring and piezometer wells from the 6-month post injection report are shown on **Figure 5** and attached in the progress report.

The 12-month post injection round of groundwater sampling is planned for May 2026. A *Remedial Action 12-Month Post Injection Report* will be prepared once analytical results are available.

### **Wisconsin Air National Guard RI at Truax Field**

DCRA continues to coordinate with the Wisconsin Air National Guard (WI ANG) remedial investigation at Truax Field.

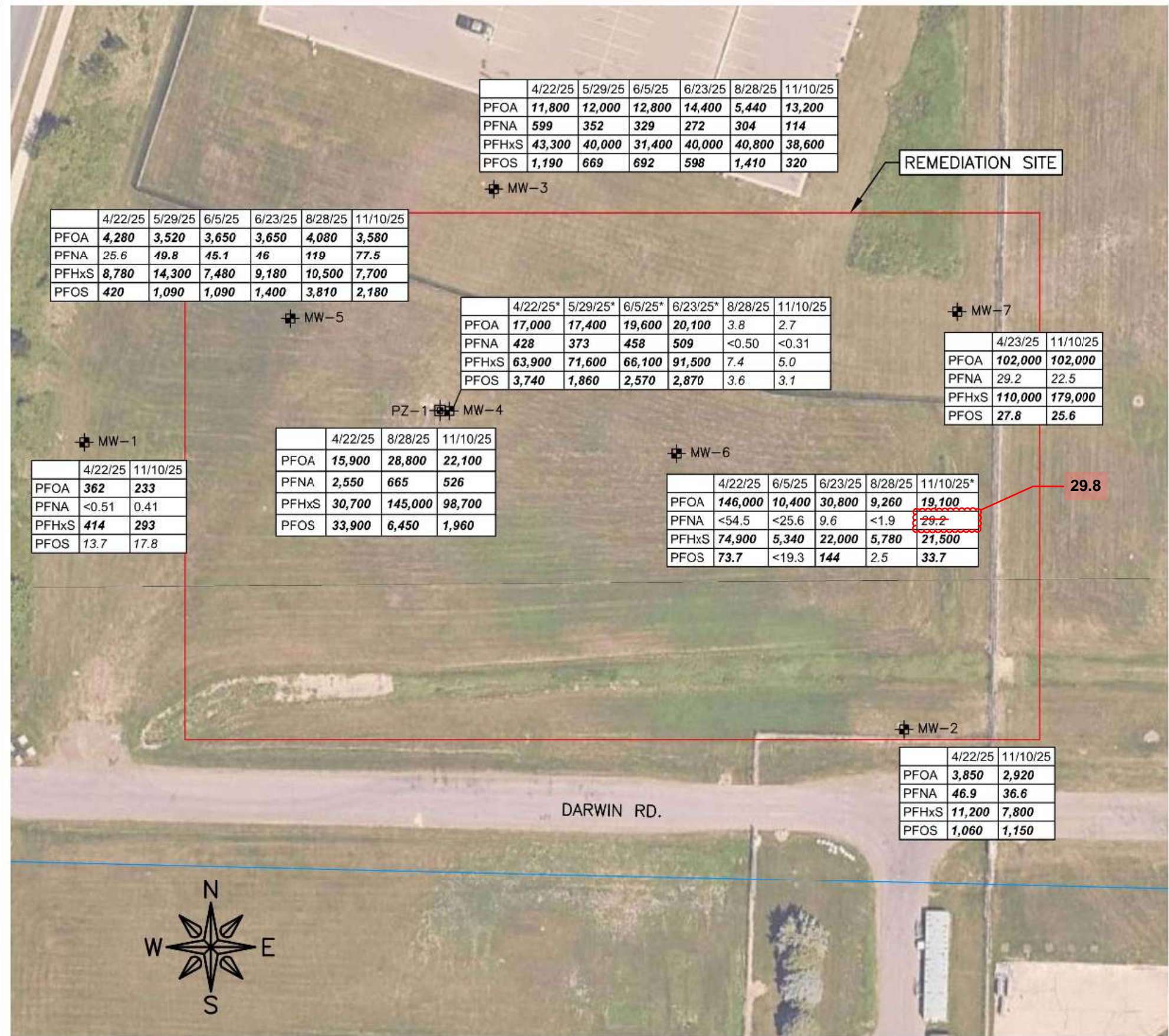


Submitted respectfully,

Digitally signed  
by Falch, Ryan  
Date: 2025.12.30  
09:54:50-06'00'

Ryan Falch, PE  
Director of Planning & Development  
Dane County Regional Airport (DCRA)

**Attachment:** Figure 5 (6-Month Reporting Map)



	4/22/25	5/29/25	6/5/25	6/23/25	8/28/25	11/10/25
PFOA	11,800	12,000	12,800	14,400	5,440	13,200
PFNA	599	352	329	272	304	114
PFHxS	43,300	40,000	31,400	40,000	40,800	38,600
PFOS	1,190	669	692	598	1,410	320

	4/22/25	5/29/25	6/5/25	6/23/25	8/28/25	11/10/25
PFOA	4,280	3,520	3,650	3,650	4,080	3,580
PFNA	25.6	49.8	45.1	16	119	77.5
PFHxS	8,780	14,300	7,480	9,180	10,500	7,700
PFOS	420	1,090	1,090	1,400	3,810	2,180

	4/22/25*	5/29/25*	6/5/25*	6/23/25*	8/28/25	11/10/25
PFOA	17,000	17,400	19,600	20,100	3.8	2.7
PFNA	428	373	458	509	<0.50	<0.31
PFHxS	63,900	71,600	66,100	91,500	7.4	5.0
PFOS	3,740	1,860	2,570	2,870	3.6	3.1

	4/23/25	11/10/25
PFOA	102,000	102,000
PFNA	29.2	22.5
PFHxS	110,000	179,000
PFOS	27.8	25.6

	4/22/25	11/10/25
PFOA	362	233
PFNA	<0.51	0.41
PFHxS	414	293
PFOS	13.7	17.8

	4/22/25	8/28/25	11/10/25
PFOA	15,900	28,800	22,100
PFNA	2,550	665	526
PFHxS	30,700	145,000	98,700
PFOS	33,900	6,450	1,960

	4/22/25	6/5/25	6/23/25	8/28/25	11/10/25*
PFOA	146,000	10,400	30,800	9,260	19,100
PFNA	<54.5	<25.6	9.6	<1.9	29.2
PFHxS	74,900	5,340	22,000	5,780	21,500
PFOS	73.7	<19.3	144	2.5	33.7

	4/22/25	11/10/25
PFOA	3,850	2,920
PFNA	46.9	36.6
PFHxS	11,200	7,800
PFOS	1,060	1,150

**LEGEND**

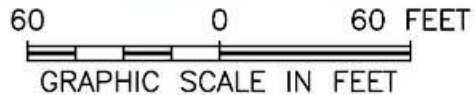
- ⊕ MONITORING WELL
- ⊕ PIEZOMETER WELL

PFOA PERFLUOROOCTANOIC ACID  
 PFNA PERFLUORONONANOIC ACID  
 PFHxS PERFLUOROHEXANESULFONIC ACID  
 PFOS PERFLUOROOACTANESULFONIC ACID

**BOLD** EXCEEDS ENFORCEMENT STANDARDS  
*ITALICS* EXCEEDS PREVENTATIVE ACTION LIMITS  
 DATE\* INDICATES DUPLICATE SAMPLE. HIGHEST REPORTED RESULT SHOWN

NOTES:  
 1. RESULTS REPORTED IN (ng/L)

**FIGURE 5**  
 PRE AND POST INJECTION  
 GROUNDWATER EXCEEDANCE MAP  
 INTERNATIONAL LN. &  
 DARWIN RD.  
 MADISON, WI



12/15/25

**FEHR GRAHAM**  
 ENGINEERING & ENVIRONMENTAL  
ILLINOIS DESIGN FIRM NO. 191-003923

ILLINOIS  
 IOWA  
 WISCONSIN